

# WELCOME

Good morning and welcome to St. Luke Lutheran Church! We know that life is complicated, and you want to get it right. We want to help and hope you find rest and renewal today. We would love to know a little more about you so we can serve you better, please fill out a Connection Card and place in in the offering plate during the service today. If you would like to learn more about our church, please visit the Information Center and pick up a "New to St. Luke" brochure.

## KIDS ARE IMPORTANT TO US

Please know that kids are welcome in all of our services. Childcare is provided in the Nursery for infants through age 3. More than just music videos and goldfish crackers, we've designed age appropriate activities to introduce three important ideas to your infant or toddler: **God made me, God loves me, and Jesus wants to be my friend forever.** Should you need to step out of the service with your infant, the Parents Lounge is available in Room 116 with a live video feed of the 10:30 am service.

## KIDSCURCH

Kids can sometimes get a little anxious during the service. During the 10:30 am service, we have a special time of learning, games and crafts designed for kids grade 3 and below we call KidsChurch. We hope this will help you engage with today's teaching while providing your kids an enriching time geared just for them.

## HOST A LIFE GROUP

At St Luke we know that you want to grow deeper in your faith. In order to do that, you need a safe place where you can learn God's word and ask questions among friends. The problem is finding the time, which makes you feel frustrated. We believe that you know your schedule better than anyone. We've found that starting a new life group that meets in your own home on a night that works for you over a six-week trial period has worked well for others. **So, sign up on the back of your Connection Card today. And in the meantime, visit [stlukecolumbus.com/host](http://stlukecolumbus.com/host) to learn more.** Stop feeling frustrated and experience a deeper, more meaningful faith with a group of Christian friends.

# NEWS & NOTES

## PARTY IN THE PARK

Celebrate summer coming to a close with a churchwide party at Hannah Park ([547 Clark State Rd, Gahanna](#)) on Sunday, August 18, 5 to 7 pm. This will be a great way to invite your friends and neighbors to join us for a huge picnic, with fun and games for all ages! Get your picture taken at the photo booth, classic board games, a water balloon toss and wiffle ball!

Potluck Information: We ask that each family bring the type of dish that corresponds with the first letter of your last name. A-M: Side Dish and N-Z: Dessert. We will provide drinks and the main dish of beef brisket, pulled pork, and hotdogs! [Help us with the headcount, RSVP on the back of your Connection Card today!](#)

## CARE LETTERS

Please stop by the Information Center today to sign care letters for a congratulation card for Abbey and Michael Lowther on the birth of their son, Colton Gray, July 19. Get well cards for Julie Carson and Nancy Himmer.

## ALTAR FLOWERS

Today's altar flowers are given by Judy Brewer in honor of Ava Marie Happy 16th Birthday you are a blessing.

# SERVE

## HELP US MAKE IT PERSONAL EVERY SUNDAY

Just as Jesus made it personal with Zacchaeus and changed his life, so the church makes it personal with kids, students, and guests because too many people feel invisible or ignored. We are seeking volunteers to work with our kids, students, and guest services this Fall so that everyone can experience a life changing relationship with Christ. [Sign up on the back of your Connection Card for the areas you are interested in and a member of our team will be in touch with you. In the meantime, stop by the information tables to learn more.](#)

## CREATE SECURITY

Every year, our quilters make blankets that provide security for kids in foster care. If you can thread a needle, tie a knot, and use straight pins with out drawing blood, you have what it takes to help make a quilt. [No need to sign up, simply join this fun group on Thursday, August 8 at 9:30 am in the Fellowship Hall. In the meantime, call Dyanne Radke if you would like to learn more \(614-371-5868\)](#)



## SCHOOL SUPPLY DRIVE

Kids around the world have a hard time learning when they don't have the proper supplies. Each year at this time, we partner with Lutheran World Relief to make sure those kids have what they need to learn so they can break the cycle of poverty and make their communities better. A small investment on your part can make a world of difference. [Pick up an updated list of needed supplies at the Information Center today or make a donation. Please write "Item of the Week" on your check or text any amount to 84321 with the word "item". Our item of the week is Notebooks.](#)

## MOVING FURNITURE

Volunteers are needed to help move classroom furniture **next Sunday, August 11 at 11:30 am** in preparation for carpet cleaning. [No sign up needed, simply show up and lend a hand.](#)

## FAITH MISSION

When you serve at Faith Mission, you allow more time for their staff to personally meet the needs of our homeless neighbors in Columbus. [Sign up to help on the back of your Connection Card.](#) Our next service date is Sunday, August 11 at 4:15 - 6:15 pm and 6:15 - 8:15 pm. A shift of eight volunteers are needed. Volunteers must be 14 years old.

# ADULTS

## WOMEN'S SUMMER GATHERINGS

Summer is often a time when we get out of our routines and can feel disconnected. Reconnect this summer in a relaxed setting with other women of St. Luke and enjoy an evening out with light refreshments, inspiration and prayer. Join us on Tuesday, August 6, 7 pm at the home of Kathleen Benis (2161 Horns Hill, Newark) for a teaching by Susie Larson on the power of prayer. [Please call \(614\) 499-8129 to let us know you're coming.](#) Meet at the church before 6:15 pm that evening if you wish to carpool.

# STUDENTS

## SUMMMER ACTIVITIES

August 11 // Columbus Clippers Game  
August 18 // Party in the Park  
August 25 // Parent Workshop on Technology

# KIDS

## ST LUKE KIDS BACK TO SCHOOL

Starting September 8, kids ages Prek-3rd grade will meet to start our first new series: "Back to School". Kids will experience worship, discussion, games and crazy skits appropriate for their age, and be given a chance to form new friendships with other kids and leaders!

## WEEKLY EVENTS

### SUNDAY, August 4

8:45 am Traditional Service  
10:30 am Contemporary Service  
11:30 am Traditional Service

### TUESDAY, August 6

7 pm Women's Summer Gathering

### THURSDAY, August 8

Global Leadership Summit  
9:30 am Quilters  
7 pm Band Rehearsal  
7 pm Council Meeting

### FRIDAY, August 9

Global Leadership Summit  
6:45 am Men's Breakfast Bible Study  
4 pm Prayer Team

### SUNDAY, August 11

8:45 am Traditional Service  
10:30 am Contemporary Service  
11:30 am Traditional Service  
4:15 pm Faith Mission

## SAVE THE DATE

AUG 18 Party in the Park  
AUG 25 Life Group Leader Huddle  
AUG 25 Life Group Host Orientation  
AUG 28 Life Group Host Orientation  
SEPT 8 New Sunday Schedule Begins  
SEPT 15 German Partnership Sunday  
SEPT 22 Fall Life Group Series Begins

## GIVING & ATTENDANCE

OPERATION WEEKLY NEED \$ 13,462  
Sunday, July 28 \$ 9,044

BUILDING WEEKLY NEED \$ 1,269  
Sunday, July 28 \$ 955

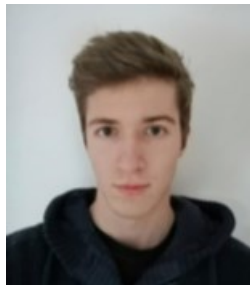
WORSHIP ATTENDANCE  
Sunday, July 28 270

FOOD PANTRY DONATIONS:  
July 2019: 144 YTD: 3,531

### OUR GERMAN FRIENDS ARE COMING!

This September 12-18, twenty-five members of our partner church in Germany, Kirchengemeinde Warder, will be visiting St. Luke. Members of their Gospel Choir will sing at our services on September 15 and that evening we will host a good old Lutheran Potluck to get to know our guests. Mark your calendars for September 15 and let's make this a memorable time sharing our cultures and ministry!

Leading up to their trip, we'd like to introduce you to the members of their church who will be coming. Kent and Cathy Sprunger will be hosting Lennart Sanning.

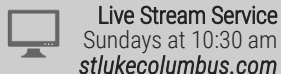


Lennart

## ST. LUKE LUTHERAN CHURCH

4456 MORSE ROAD, COLUMBUS OH, 43230 // [stlukecolumbus.com](http://stlukecolumbus.com)

|               |                  |                |  |
|---------------|------------------|----------------|--|
| Church Office | Patti Peterson   | (614) 471-7326 | <a href="mailto:stlukeoffice2@gmail.com">stlukeoffice2@gmail.com</a>     |
| Pastoral Care | Steve Brown      | (614) 286-5106 | <a href="mailto:stevebrown304@gmail.com">stevebrown304@gmail.com</a>     |
| Pastoral Care | Mike Weaver      | (614) 323-0017 | <a href="mailto:mikew44@icloud.com">mikew44@icloud.com</a>               |
| Adults        | Aaron McCullough | (614) 940-2754 | <a href="mailto:mccullat@gmail.com">mccullat@gmail.com</a>               |
| Students      | Greg Osborne     | (614) 530-3356 | <a href="mailto:osborne.gregory@gmail.com">osborne.gregory@gmail.com</a> |
| Kids          | Colleen Zielke   | (614) 406-6216 | <a href="mailto:colleenzielke@gmail.com">colleenzielke@gmail.com</a>     |



Sunday, August 4, 2019



I DON'T  
WANT  
TO BE A  
RICH  
FOOL